



House & Land Package

Ashley 22A

Lot 4 Goynes Road, Elmwood, Epsom

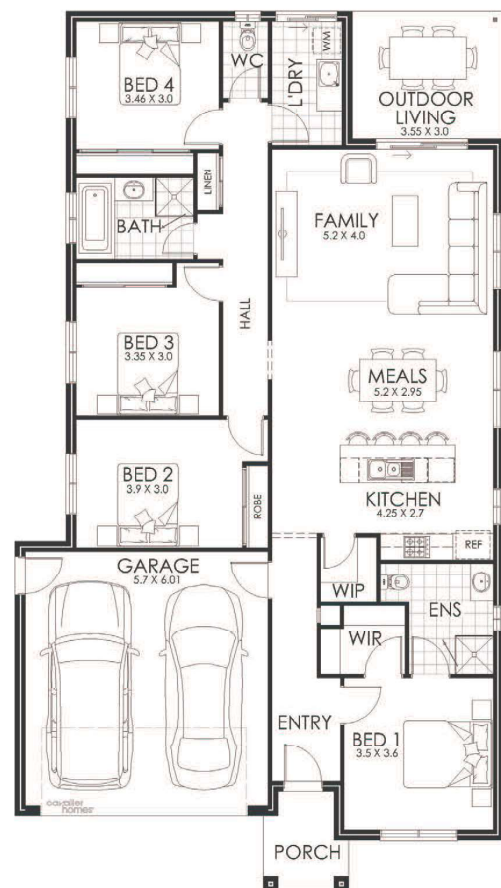


Lot Size: 601 m²

\$ 620,933.00 FIXED

List of Inclusions:

- FIXED SITE COSTS Including BAL 12.5
- Colorbond Steel Roofing
- 3 Coat Paint System
- Quality Flooring Throughout
- Heating & Cooling
- Induction Cooktop & Built In Oven
- Double Glazing to All Windows & External Doors
- Heat Pump Hot Water Service
- Natural Concrete to Porch, Driveway & Alfresco
- 7 Star Energy Rating & Liveable Housing Design
- 12 Month Price Hold Guarantee



cavalier homes
REAL HOMES.. REAL PEOPLE.

Find Out More

Contact: Lisa Nankervis
0448 177 483

All prices, images, inclusions and plans shown in this document and any Display Home vary throughout Australia and over time and are provided as a guide only. Unless otherwise stated in writing, new home prices do not include furniture, decorator items, driveways, paths, landscaping, swimming pools, letterboxes, fencing, security systems, vacuum systems, telephone, intercom and communication systems, air conditioning, heating systems and or connection fees. All Cavalier Homes designs are copyright. None of the information provided in this brochure forms part of any contract with Cavalier Homes and you should not rely upon any information contained in this brochure in deciding whether to enter into any contract with Cavalier Homes. Please refer to the particulars of your Contract for the specific design and details of any inclusions.